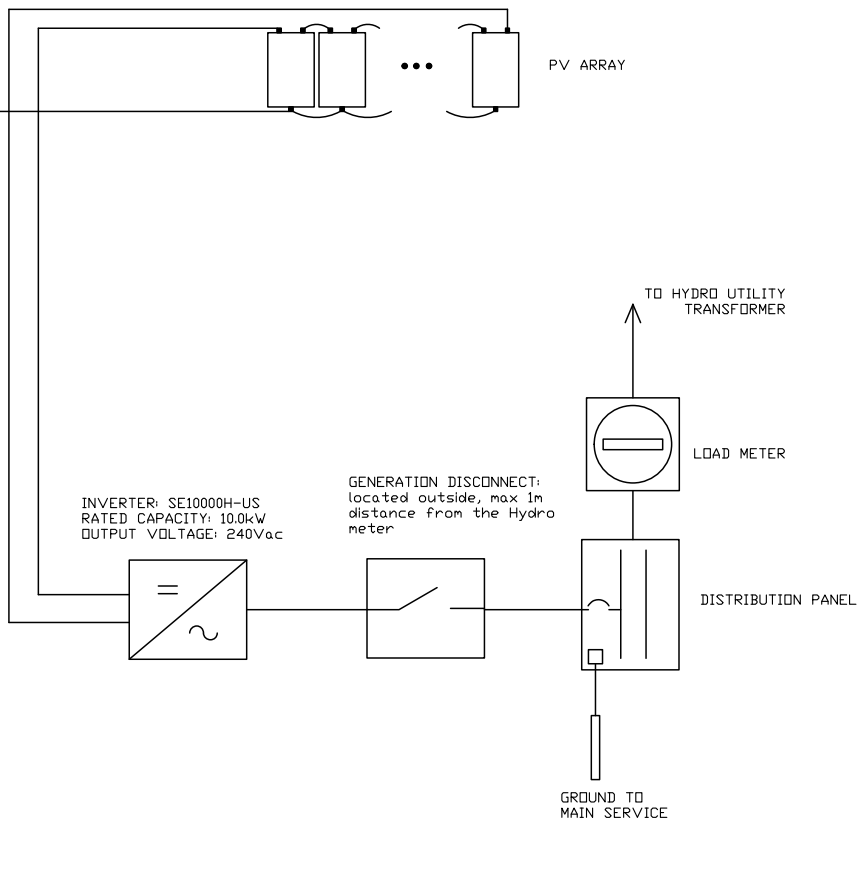


DC SOURCE  
35 X 405W LONGI SOLAR MODULES  
POWER: 14.17 kW

MODULE ELECTRICAL CHARACTERISTICS  
Voc: 49.1 Vdc  
Vmp: 41.1 Vdc  
Isc: 11.6 Adc  
Imp: 10.96 Adc

AWG #6  
BARE COPPER  
GROUNDING  
CONDUCTOR



PV ARRAY

INVERTER: SE10000H-US  
RATED CAPACITY: 10.0kW  
OUTPUT VOLTAGE: 240V<sub>ac</sub>

GENERATION DISCONNECT:  
located outside, max 1m  
distance from the Hydro  
meter

TO HYDRO UTILITY  
TRANSFORMER

LOAD METER

DISTRIBUTION PANEL

GROUND TO  
MAIN SERVICE